

The Cultural Heritage in Swedish Environmental Policy

European Heritage Heads Forum
Copenhagen May 2008

Maria Wikman
The Swedish National Heritage Board





The environment is everyone's responsibility

Heritage is a common asset, but also a common responsibility

- Inter-sectoral co-operation
- Holistic view
- Joint solutions

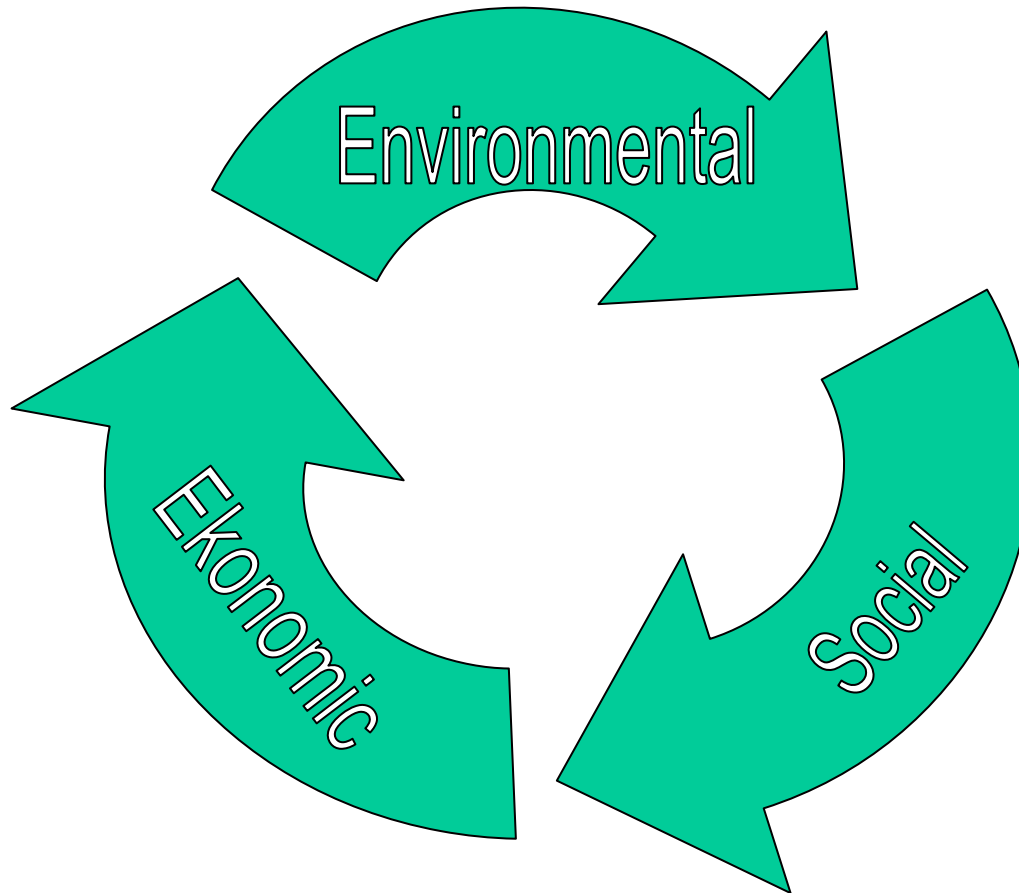


The five basic values of Swedish environmental policy

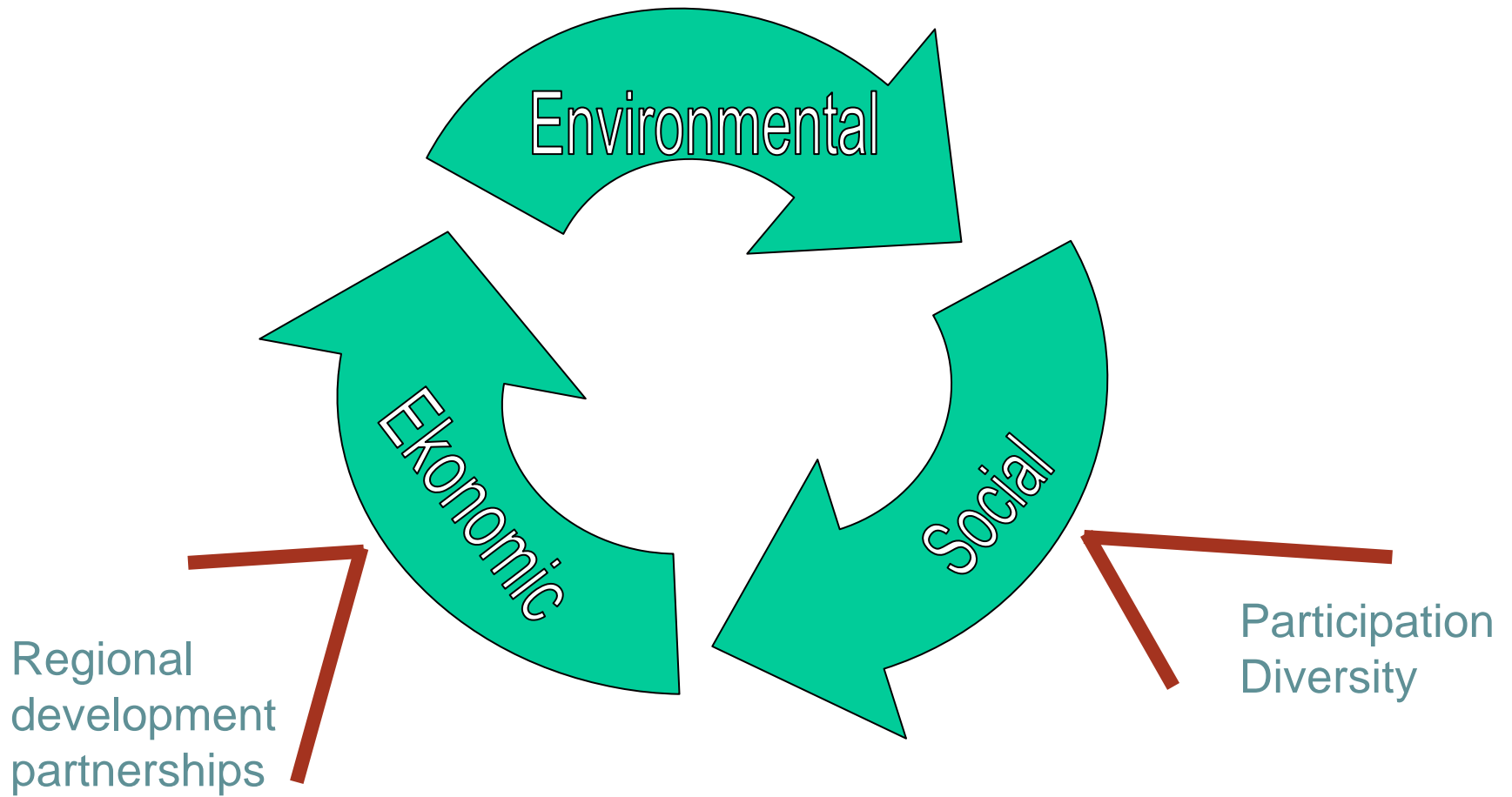
- Promoting human health
- Safeguarding biodiversity and the natural environment
- Preserving and using the heritage environment and its innate qualities
- Preserving the long-term productive capacity of ecosystems
- Securing good management of natural resources



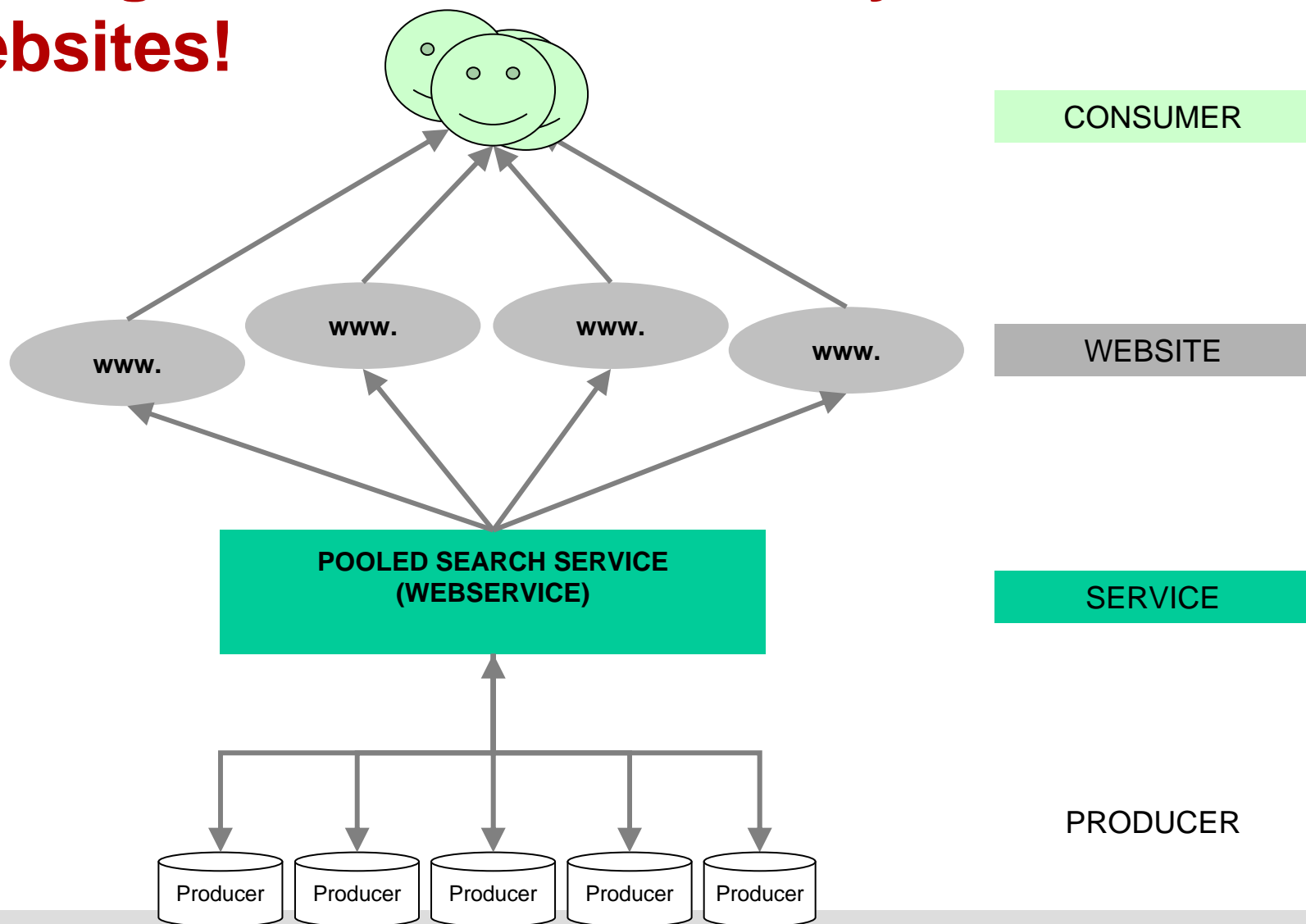
Sustainable development



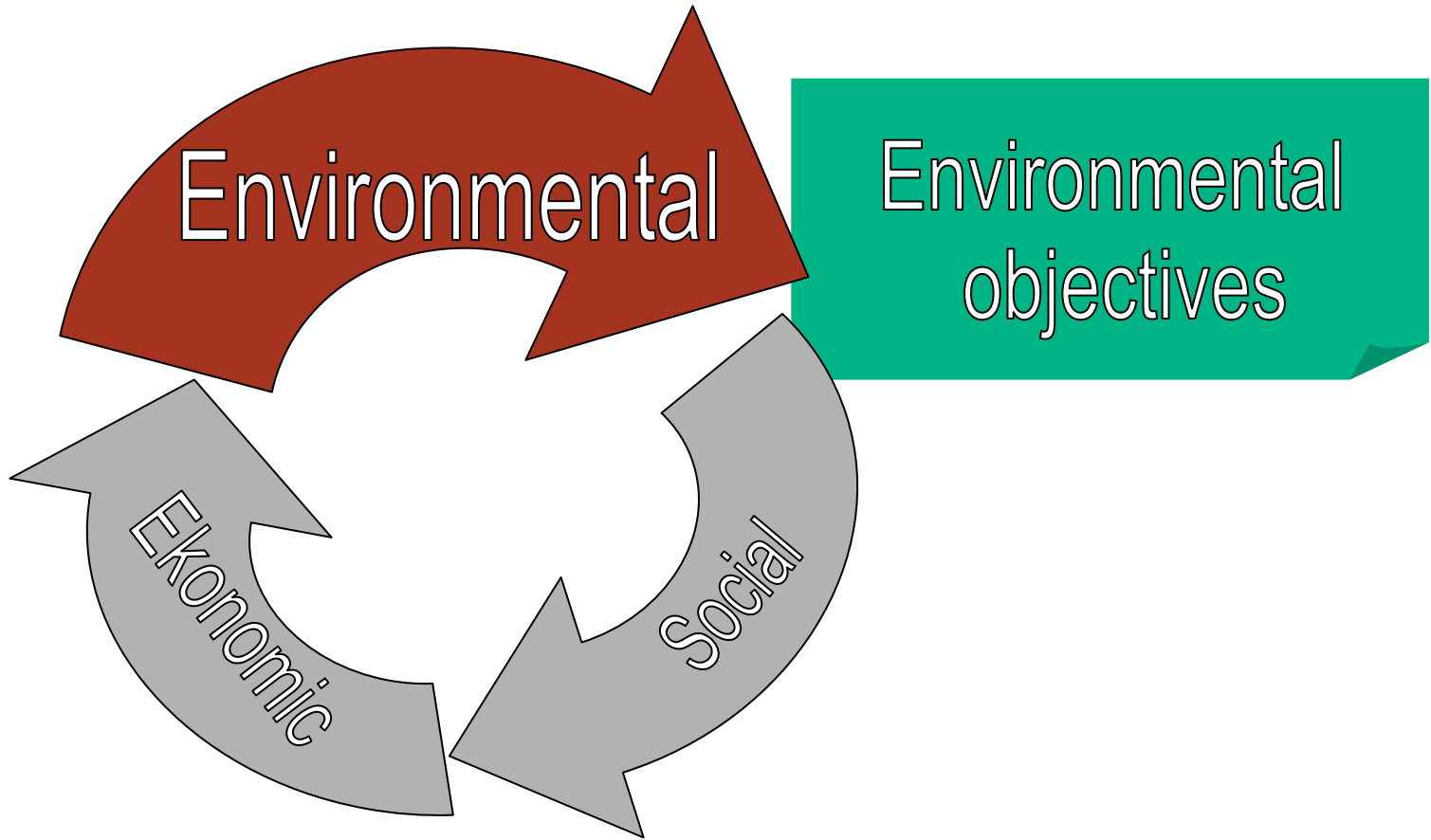
Sustainable development



Heritage information on many websites!

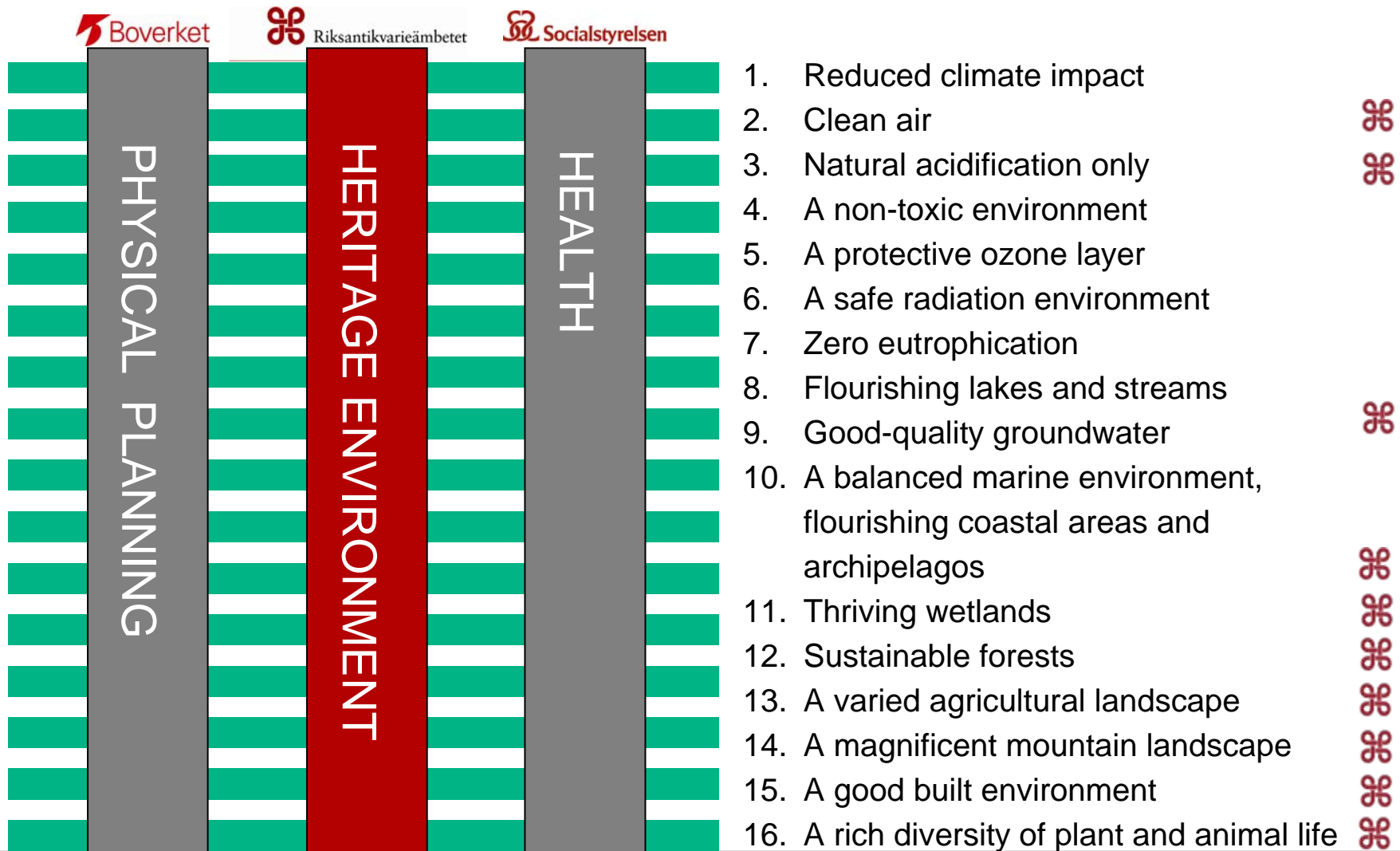


Sustainable development



16 environmental objectives

– 3 overarching concerns



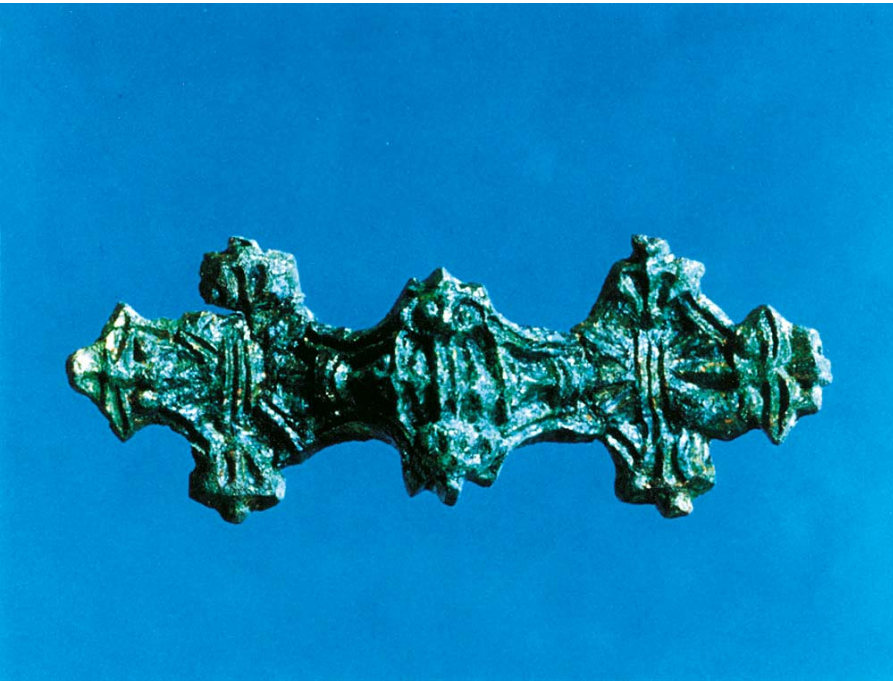
Strategic and long-term heritage surveillance

Means recurrent and systematic surveys to

- describe the state of the environment,
- disseminate information gathered,
- assess processes of change and threat scenarios,
- furnish input data for the definition of operational priorities,
- follow up measures decided on.



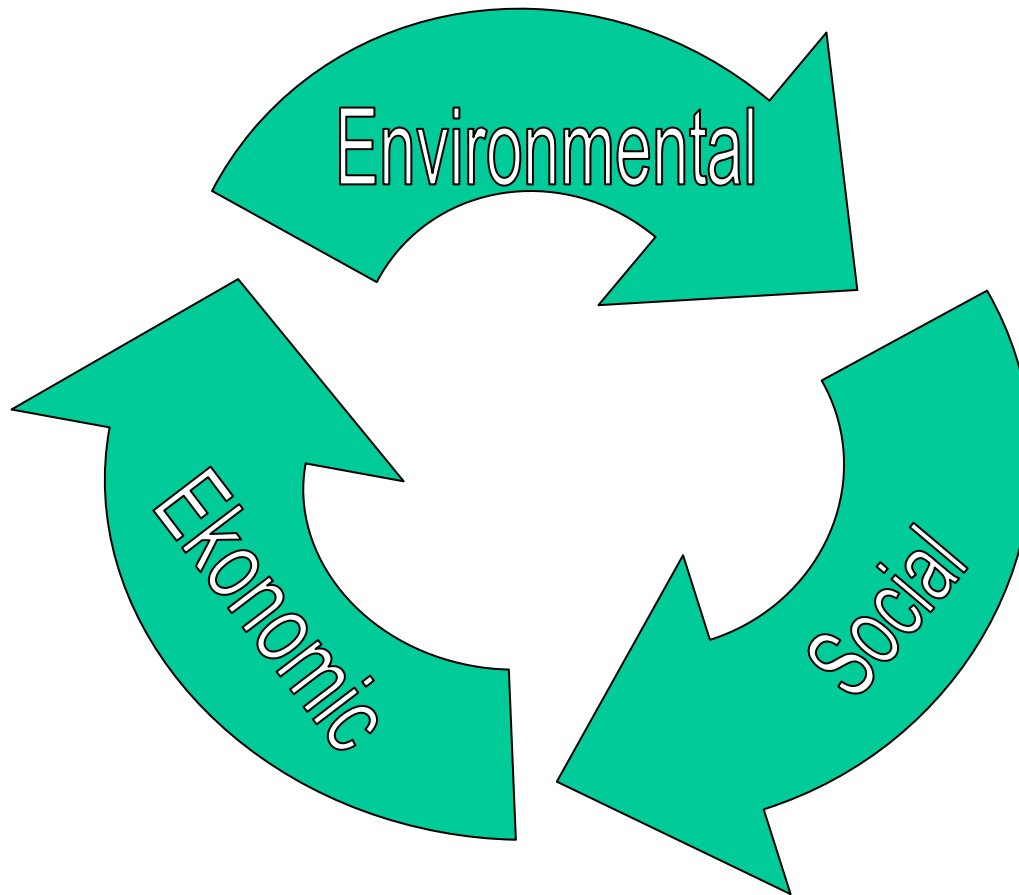
Finds in the ground are vanishing



Testimony in stone – the runes are crumbling away in polluted air



Sustainable development



Maria Wikman

maria.wikman@raa.se

**The Swedish
National Heritage
Board**

Department for
Sustainable Management

www.raa.se

