



Historic England

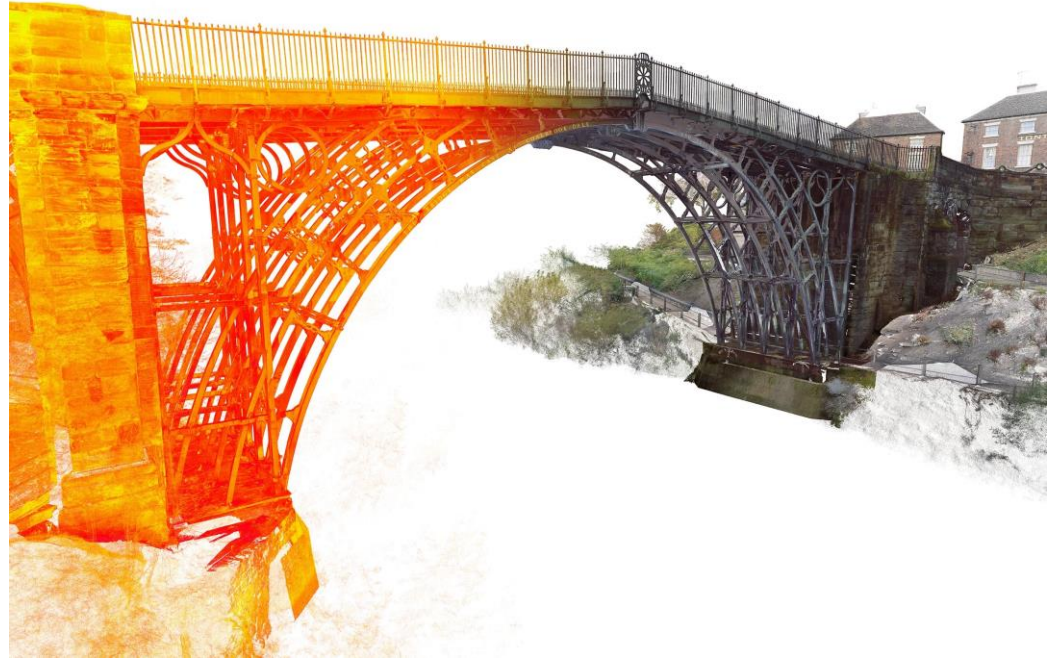
The conversion of industrial heritage in England

Duncan Wilson
Chief Executive, Historic England

EHHF annual meeting, Luxembourg
Thursday 17 May 2018



Iron Bridge, Shropshire by Abraham Darby III. The world's first major cast-iron bridge opened in 1781 is at the heart of an industrial landscape comprising 36 listed or scheduled structures.



The Iron Bridge - showing a representation of the laser scan data that was captured in 2012 and contributed to the current investigation, repair and conservation of this iconic industrial monument.



Salt's Mill, Saltaire, Victoria Rd, Shipley, West Yorkshire. Interior, ground floor bookshop & 1853 Gallery, showing public enjoying historic fabric.



Historic England



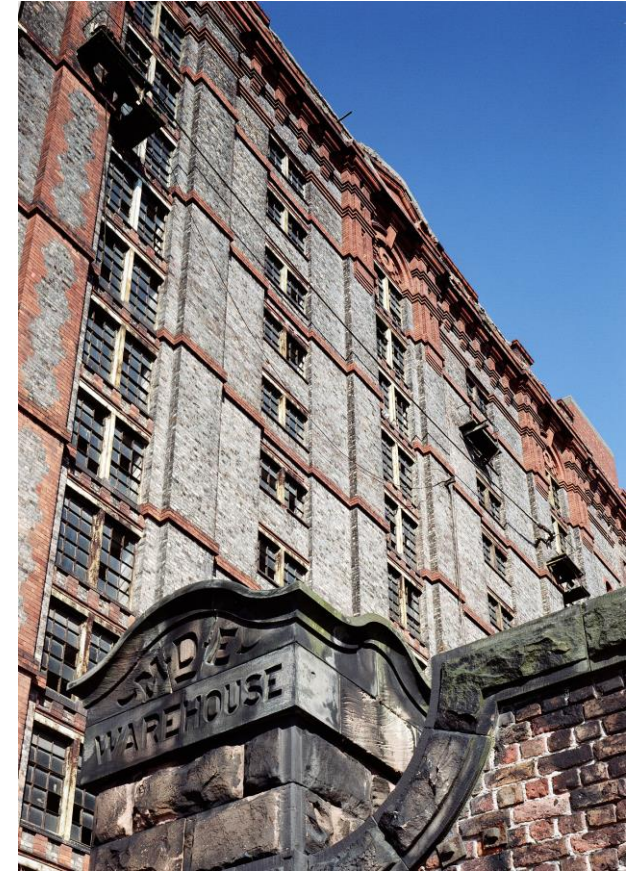
The converted North Warehouse, Stanley Dock, incorporating the new Titanic Hotel, Liverpool WHS.



Historic England



Titanic Hotel, Stanley Dock, North Warehouse,
Liverpool.



The huge Tobacco Warehouse,
Stanley Dock, Liverpool, being
converted to 538 apartments.



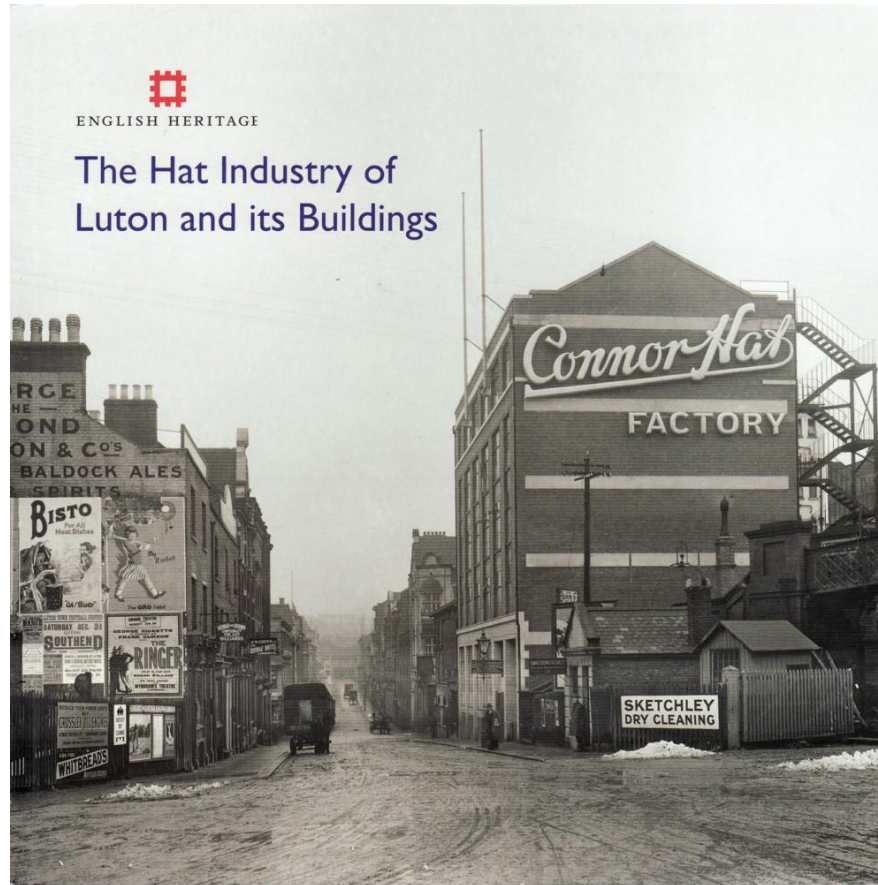
Taylor's Shaft pumping engine house and chimney from the south west, East Pool mine, Cornwall, Cornwall and West Devon Mining Landscape WHS.



J W Evans and Sons Ltd, 54-57 Albion Street, Jewellery Quarter, Birmingham, West Midlands. 1st Floor, fly press shop.



J W Evans and Sons Ltd silverworks undergoing major conservation works prior to opening to the public by English Heritage as a visitor attraction.



The cover of one of our *Informed Conservation Series* small format popular books on the hatting area of central Luton, Bedfordshire. This previously poorly understood area was researched to help inform and shape its sensitive redevelopment.



Derelict buildings and former headstocks at Chatterley Whitfield Colliery, Stoke on Trent, Staffordshire



Clipstone Colliery, Nottinghamshire, a state of the art post-war deep mining facility with 213ft high headframes.



Industrial Heritage at Risk, Bellman Park Lime Kilns, Clitheroe, Lancashire. A structurally unsound building with no real potential for adaptive reuse



The headframe of the last working commercial tin mine in Cornwall at South Crofty on the margins of the WHS. The mine was closed in the late 1990s but there are plans to reopen it.



Power Stations - Ironbridge Power Station, Buildwas Road, Telford, Shropshire



Historic England



Whitechapel Bell Foundry, 32-34 Whitechapel Road, Tower Hamlets, London.



Whitechapel Bell Foundry, 32-34 Whitechapel Road, Tower Hamlets, London. Interior, casting room, filling the moulds.



The Grade I listed Queen Street Mill, Burnley, Lancashire, the last steam-powered weaving shed in Britain. Lancashire County Council has recently closed the museum as a cost-cutting measure. We are working with the Council and other partners to find a solution.



Left: Grade II* Rawson's Mill, Calderdale, Yorks, also known as Old Lane Mill was built for James Ackroyd in 1825-28. It is the oldest and largest surviving example of a multi-storey, steam powered, iron-framed textile mill and has been derelict for decades. Right: Derelict mill in Rochdale, Greater Manchester.



Fakenham Gas Museum, Fakenham, Norfolk, which produced gas from 1845 to 1965. It is the only remaining example of a town gasworks. Left: general view showing the roadside box purifiers, retort house and retort bench chimney, offices/showroom and gas holder. Right: 1960s view of the Retort House.



Shrewsbury Flaxmill Maltings, Ditherington, Shrewsbury, Shropshire, the world's first multi-storeyed, iron-framed building, dating from 1797. Spinning mill and kiln, view from north east.



Shrewsbury Flaxmill Maltings, Ditherington, Shrewsbury, Shropshire. Prince's Foundation placements Tom Mott and Sam Rowland-Simms working with Croft Building & Conservation Ltd on repairs to the roof over the main mill



Dean Clough Mills, Halifax, a former mid-19th-century carpet factory and once the world's largest. It was converted to a high-standard arts uses over a 30-year period. It includes 150 businesses employing a total of 4000 people.



The Custard Factory, Digbeth, Birmingham, a pioneering and highly successful blend of historic and new build occupied by creative businesses.



Holmes Textile Mill, Greenacre Street, Clitheroe, Lancashire, converted to a brewery, café, bar and mixed retail.



Grade II* Portland Works, Sheffield, a metal manufacturing complex where stainless steel was first produced commercially in 1914. With the support of the Heritage Lottery Fund and the Architectural Heritage Fund, the factory was purchased in 2013 by 500 community shareholders, some of whom are shown here. A great example of social enterprise.



Historic England



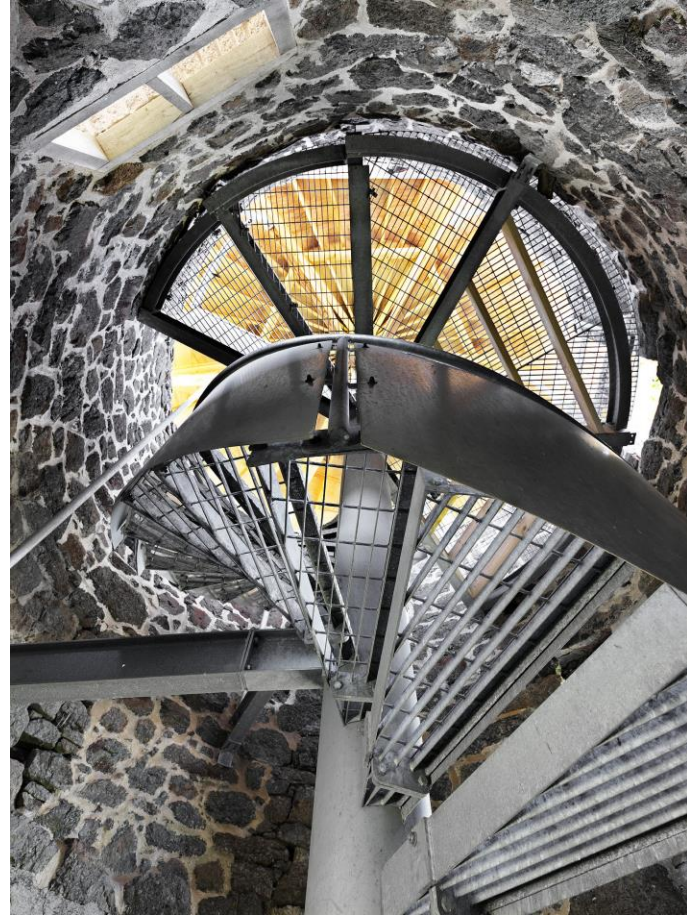
Left: Former Hemmingford Colliery, Elsecar, Barnsley, South Yorkshire, a Heritage Action Zone. Right: Volunteers maintaining the Brusselton Incline on the Stockton & Darlington Railway of 1825, a Round 2 Heritage Action Zone.



Former Gasholders, Gasholder Park, Kings Cross, Camden, London. General twilight view of gasholders No 8, 10, 11, 12, refurbished by Wilkinson Eyre Architects .



Historic England



Heritage At Risk 2016. Windmill, Windmill Farm, Landewednack, The Lizard, Cornwall.
Twilight view of windmill creatively converted to a wildlife viewing platform.