



Cultural Heritage Agency  
*Ministry of Education, Culture and  
Science*

# **Cultural landscapes and nature, how to deal with one another**

Henk Baas



# Cultural landscape or nature?





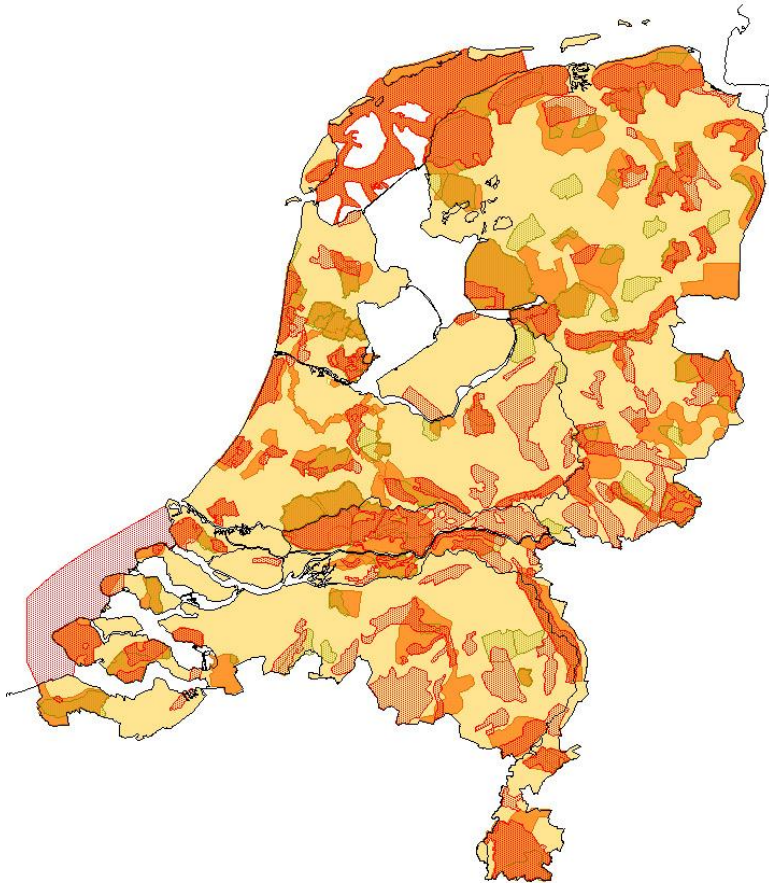


# Cultural landscape or nature?





## High valued Cultural Landscapes and National Ecological Network





# The Belvedere

Memorandum

A policy document examining the relationship between cultural history and spatial planning



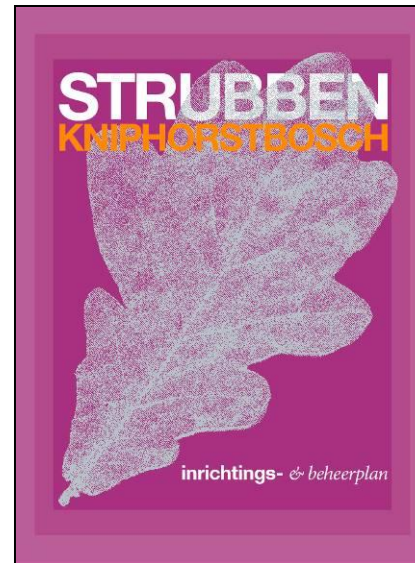
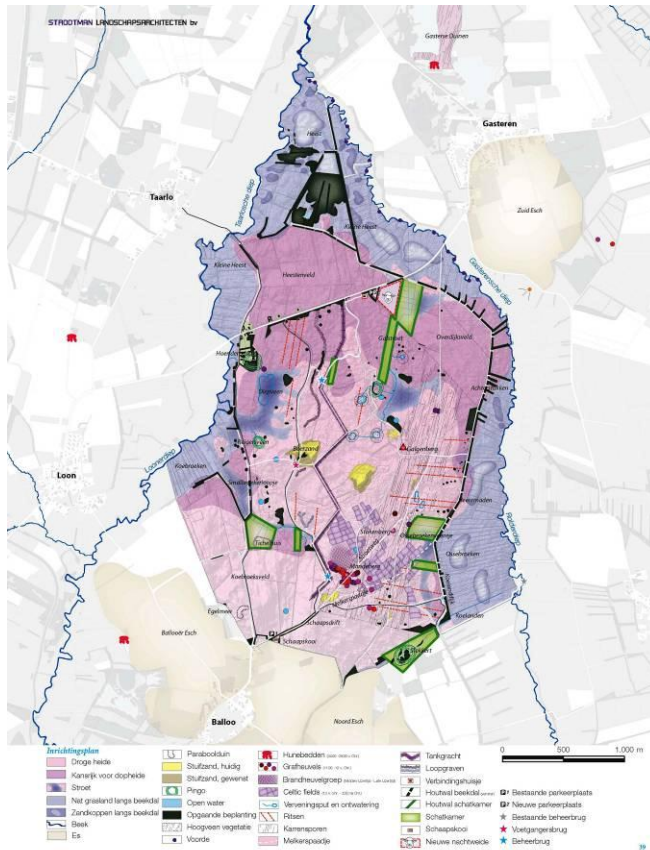


Potential for 'new' nature	Actual values (historical, ecological, geological, perception)	
	HIGH	LOW
HIGH	Preservation of cultural landscapes and half natural ecosystems; small-scale nature development within the framework of the historic landscape;	Development of large scale 'new nature'
LOW	Preservation of cultural landscapes	Development of new landscapes





# Landscape biography





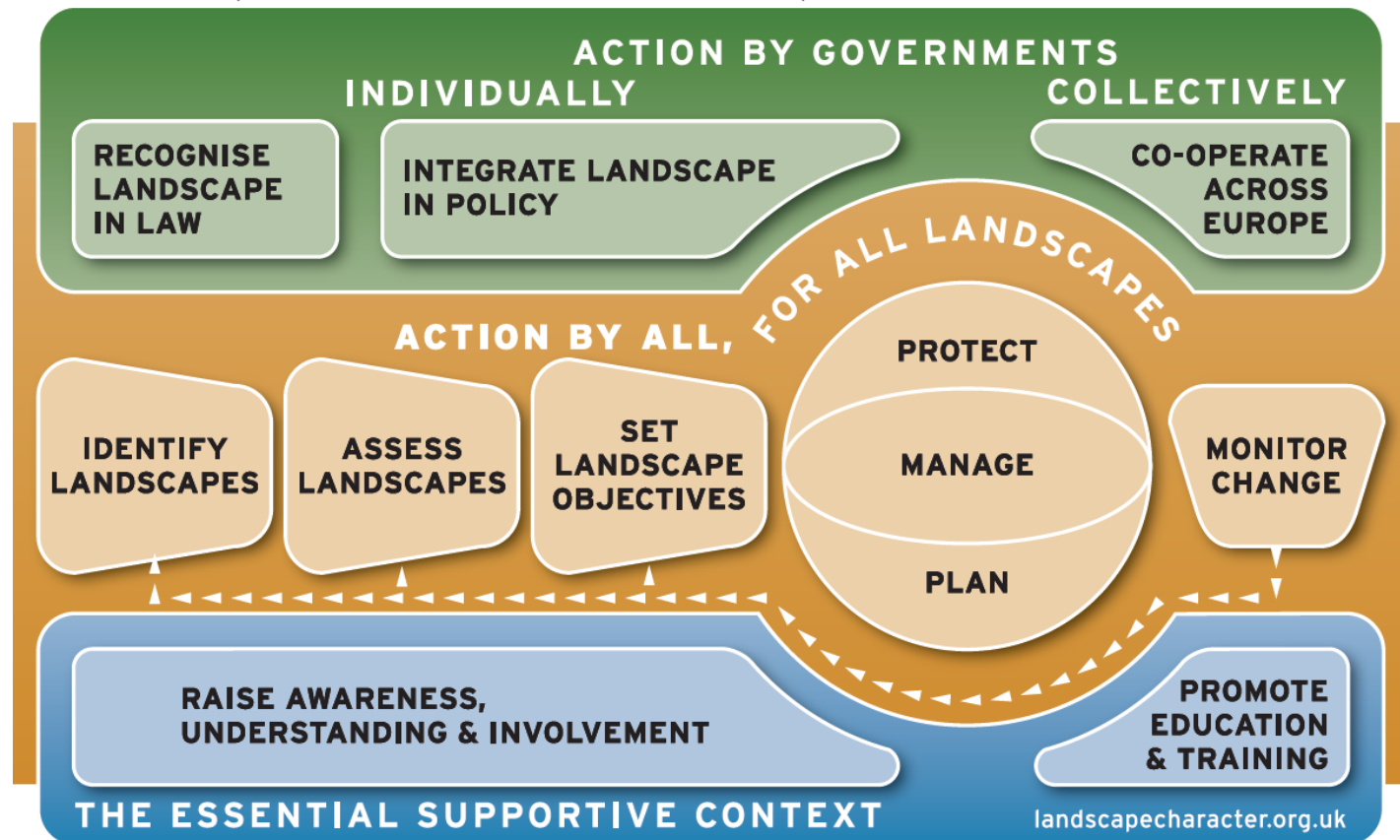
ELC:

Landscape is: an area as perceived by people,  
whose character is the result of the action and  
interaction of natural and/or human factors





# making a reality of the European Landscape Convention





## Final remarks

- Nature protection has too much focus on biodiversity. It should be more multifunctional, as part of landscape or geodiversity?
- Landscape is a social construct, so landscape is always cultural;
- Protection of nature is protection of cultural heritage;
- A landscape biography can be a useful tool to integrate nature and culture;
- The old meaning of landscape can be useful in binding society to landscape, heritage and nature;
- the European Landscape Convention could be a framework for shared action. Can we make (historic) landscape an EU concern, like nature?