



Olaus Magnus 1539

A regional approach for cultural heritage

The Monitoring Group on cultural heritage
in the Baltic Sea States

EHHF 2012 POTSDAM 25.05.2012

THE MONITORING GROUP AND
THE THEMATIC WORKING GROUPS
AS A REGIONAL INFRASTRUCTURE



BSR WORKING GROUP ON COASTAL CULTURE AND MARITIME HERITAGE

List of 100 important historic ships around the Baltic Sea including a poster exhibition

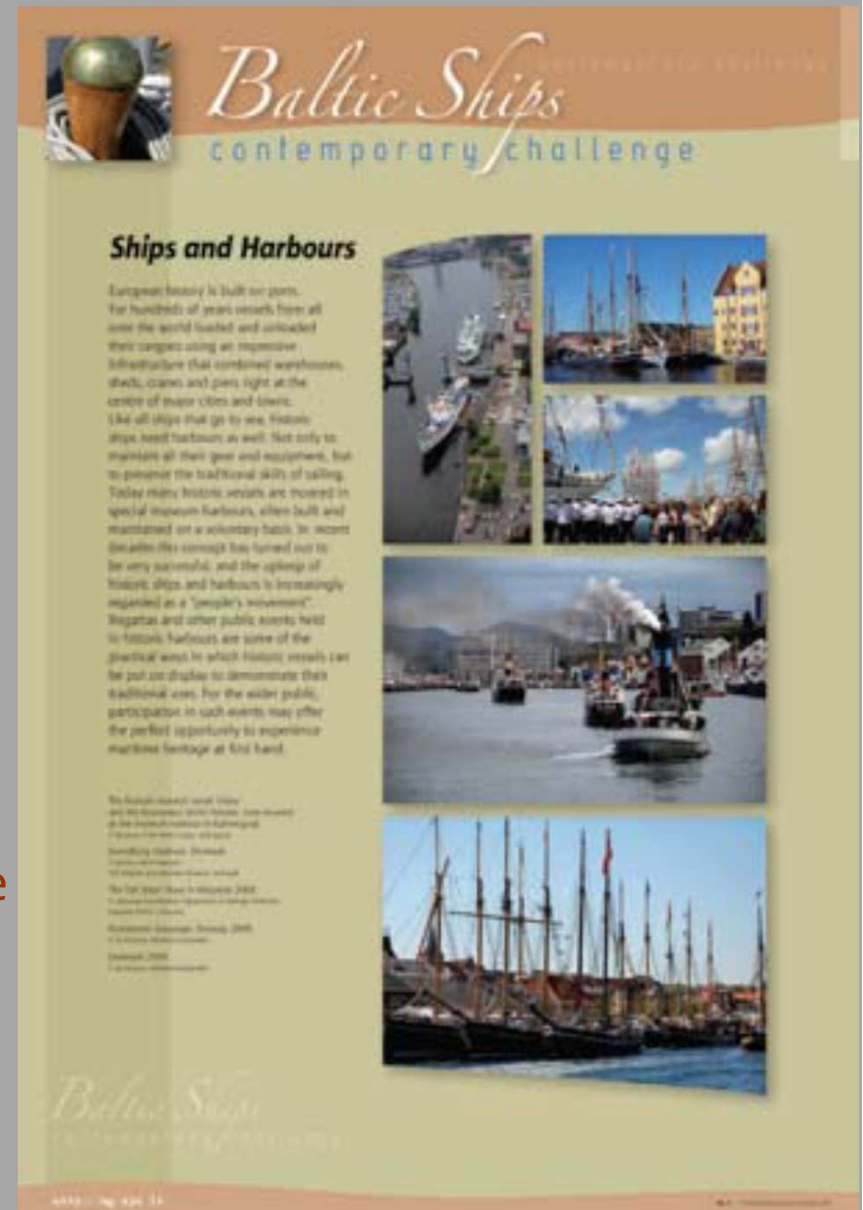
The list promotes the value and importance of historic ships and raises awareness and understanding of restoring and maintaining historic vessels.

Baltic herring-project of common traditions.

EARLIER POSTER EXHIBITIONS:

- Baltic Lights – a guarantee of safe passage
- Baltic Harbours

All financed by the NCM



BSR WORKING GROUP ON UNDERWATER HERITAGE

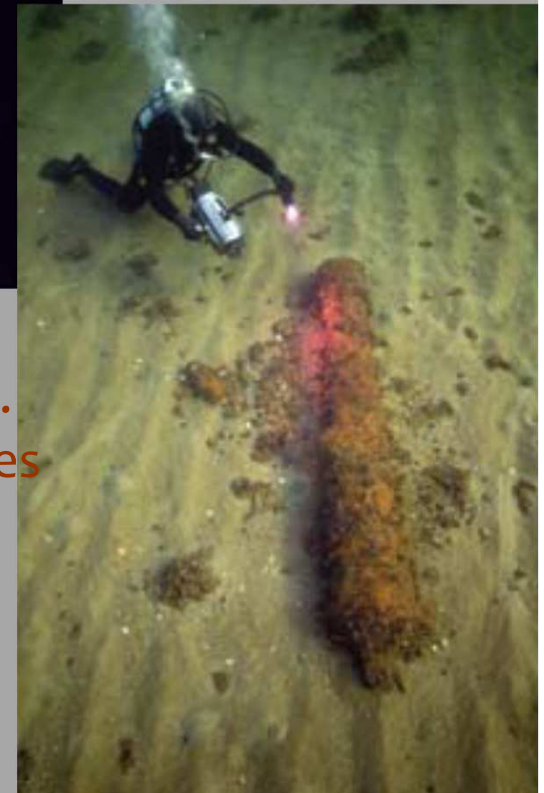


A documentary film about the 100-list of the most valuable and important underwater sites in the Baltic Sea States, 2010-2011, promotion of the COPUCH



EARLIER ACTIVITIES

The Rutilus-project on protection of underwater sites, uw archaeological education and tourism strategies 2004-06. A list of the 100 most valuable and important underwater sites in the Baltic Sea was concluded as an appendix . The Code of Good Practice for the Management of the Underwater Cultural Heritage in the Baltic Sea Region (COPUCH) as a regional agreement on underwater heritage management. 2008 (together with the MG).



BSR WORKING GROUP ON SUSTAINABLE HISTORIC TOWNS

PROJECT “SUSTAINABLE HISTORIC TOWNS – GOOD FOR CLIMATE!” 2011-2012, NCM financing

- Addresses the environmental sustainability of urban heritage resources, in response to demands from the EU and national commitments to reduce energy use and carbon footprints.

EARLIER ACTIVITIES

“Sustainable Historic Towns - Urban Heritage as an Asset of Development” -project 2003-05, Interreg III B financed.

“Communicating Heritage in urban development processes” –project 2006-2008.

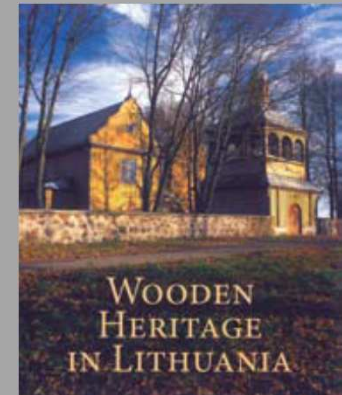
DIVE-Guidelines for analyses of urban heritage in four languages.



BSR WORKING GROUP ON BUILDING PRESERVATION AND MAINTENANCE IN PRACTICE



The WG gathers databases and reference library on the topics. Promotes and disseminates know-how.



EARLIER ACTIVITIES

Reports:

- Traditional building materials in the Baltic Sea region (2003)
- BSR Workshop on plaster conservation (2003)
- Managing traditional buildings report (2001)



THE BSR NETWORK ON INDOOR CLIMATE IN CHURCHES

- academic & experts` network connected to the MG

Cross-sector expert seminars with study-cases on site

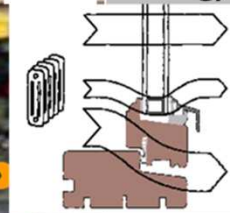


A venue for professional exchange, education and training, reviewing national and international guidelines, as well as other relevant reference material and research, assessing technical resources and personal expertise within the network, pilot projects in order to establish best practice. Two summer courses in Visby.

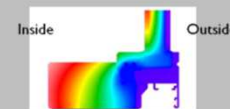
BSR CULTURAL HERITAGE FORUM- EVENTS



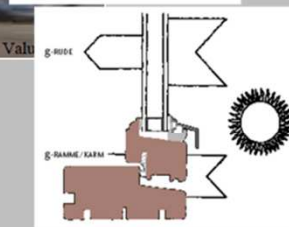
Energy flow through windows



- Energy loss through the hole window
- "Free" sun energy through the panes in heating season



Wood-aluminium window with double glazed low-e thermal panes 1.1 W/m²K. The green/azure colour indicates a thermal bridge



- Energy balance for the hole window

Centre for Building Physics
Denmark



Old log house

- Not energy efficient in operation
- Environmentally friendly materials, short transport and lightly processed materials
- Already built!
- CO₂-storage
- Long life
- Heating mainly with wood – renewable resource

Passivhouse

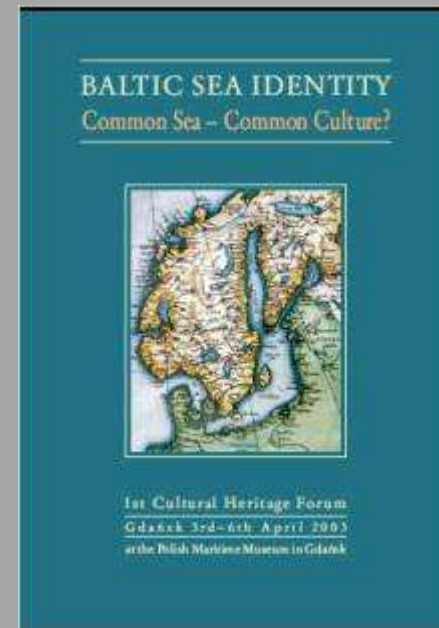
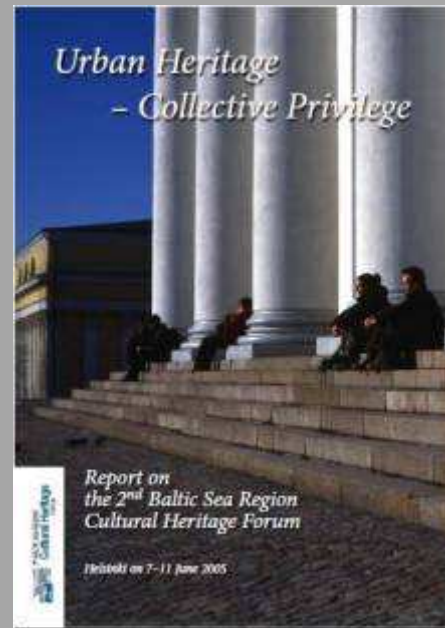
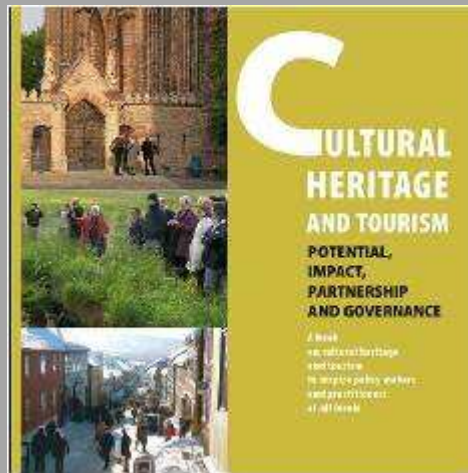
- Energy efficient in operation
- The construction demands energy and gives greenhouse gas emissions in production, transportation and waste
- Operation and maintenance means bigger environmental impact



“CULTURAL HERITAGE –
CONTEMPORARY CHALLENGE”

HOMEPAGE WITH ONLINE PUBLICATIONS

<http://mg.kpd.lt/>



A group of approximately 12 people are gathered in a courtyard with a gravel floor. They are standing in front of a large, weathered stone wall that features a prominent arched doorway in the background. The people are dressed in casual to semi-formal attire, including coats and jackets, suggesting a cool day. Some individuals are looking towards the camera, while others are engaged in conversation or looking towards the doorway. The overall atmosphere is that of a guided tour or a group meeting at a historical site.

MG 2012

CHAIR Claus von Carnap-Bornheim, Schleswig-Holstein

Coordination Marianne Lehtimäki; marianne.lehtimaki@heritage.lt

THANK YOU