



ENGLISH HERITAGE

HERITAGE AT

RISK

2009

# II\* Listed barn Herefordshire



# Old Street Police station II\*





# The Tything Conservation Area, Worcester



# Nottingham Station Conservation Area







# Stockton C.A, Cleveland





# Stockwell Park C.A. London





# Noel Park Conservation Area, Haringey



# Noel Park Conservation Area, Haringey





# Holmfirth C.A. West Yorks



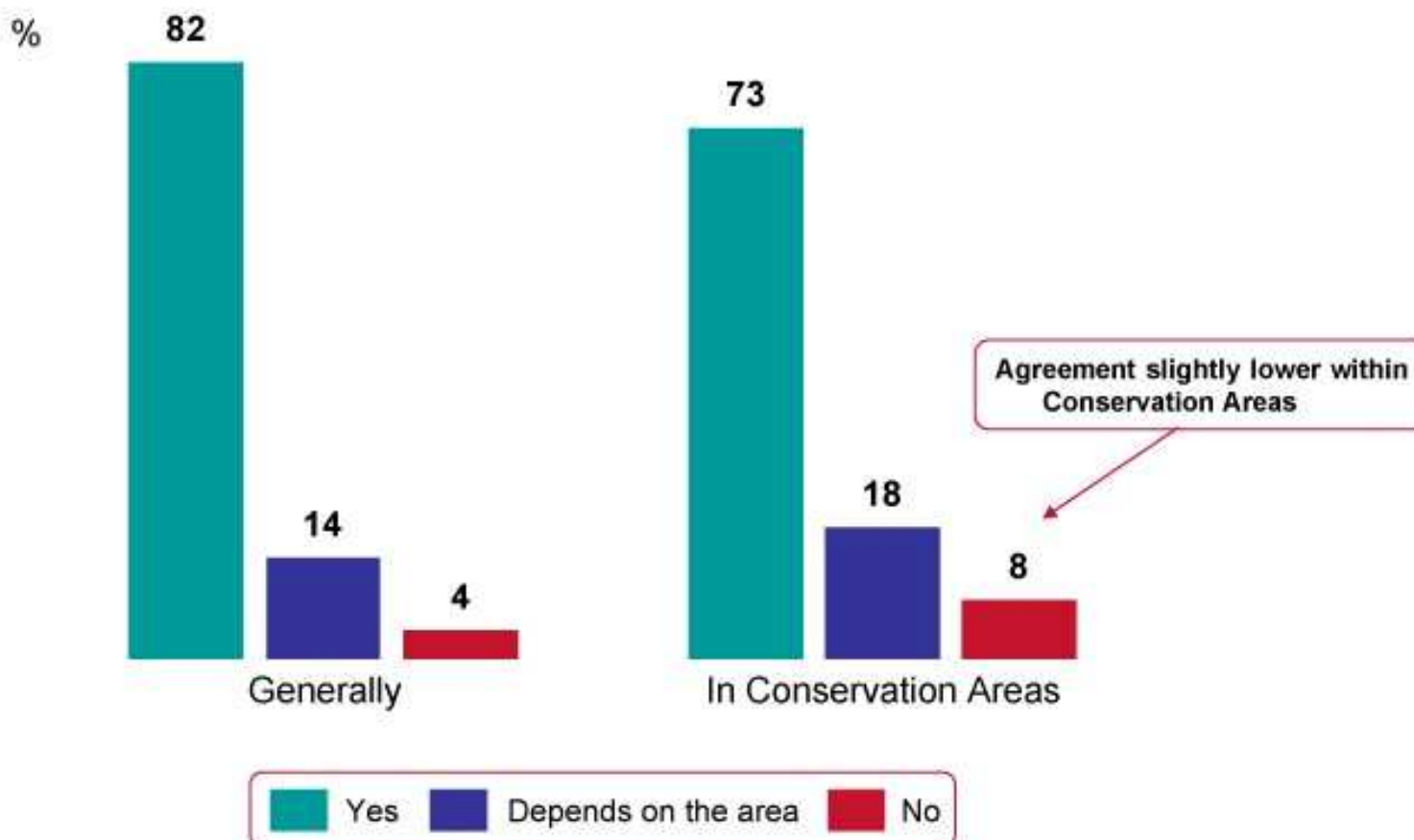
# Berwick-upon-Tweed





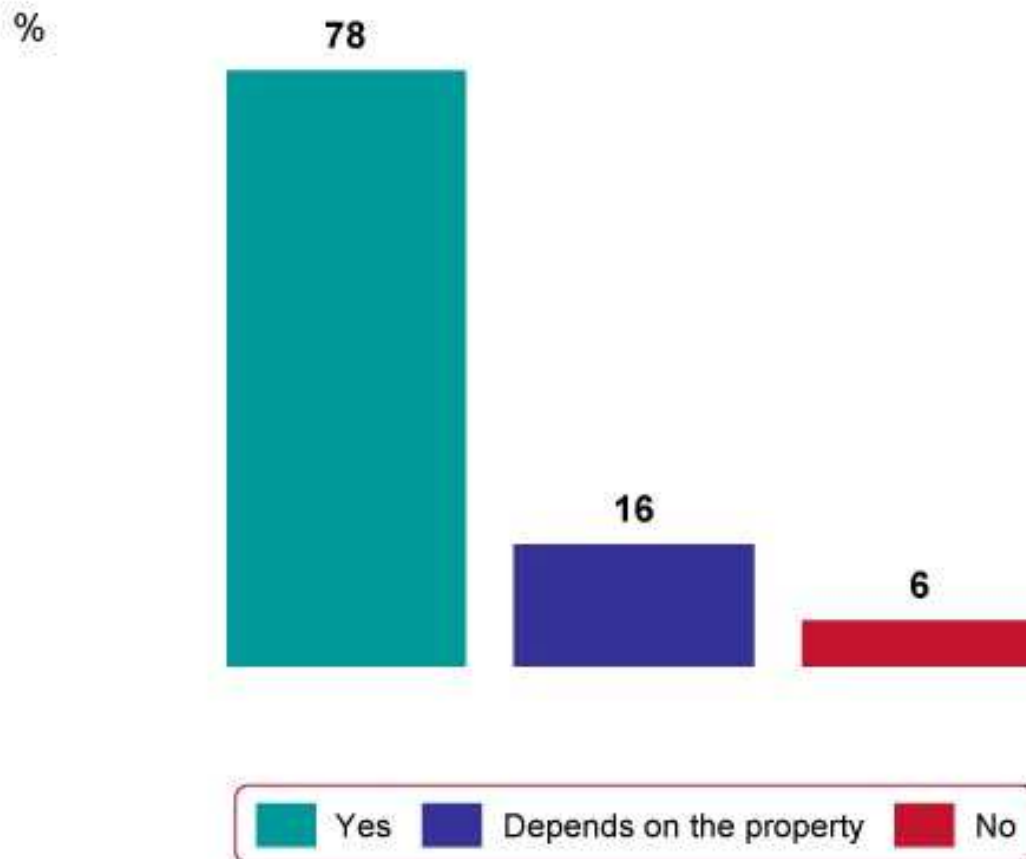
# Strong agreement that original period features add financial value to properties

Q: In your opinion, do original period features tend to add financial value to a residential property?



# Strong agreement that original period features tend to help sell residential properties more quickly

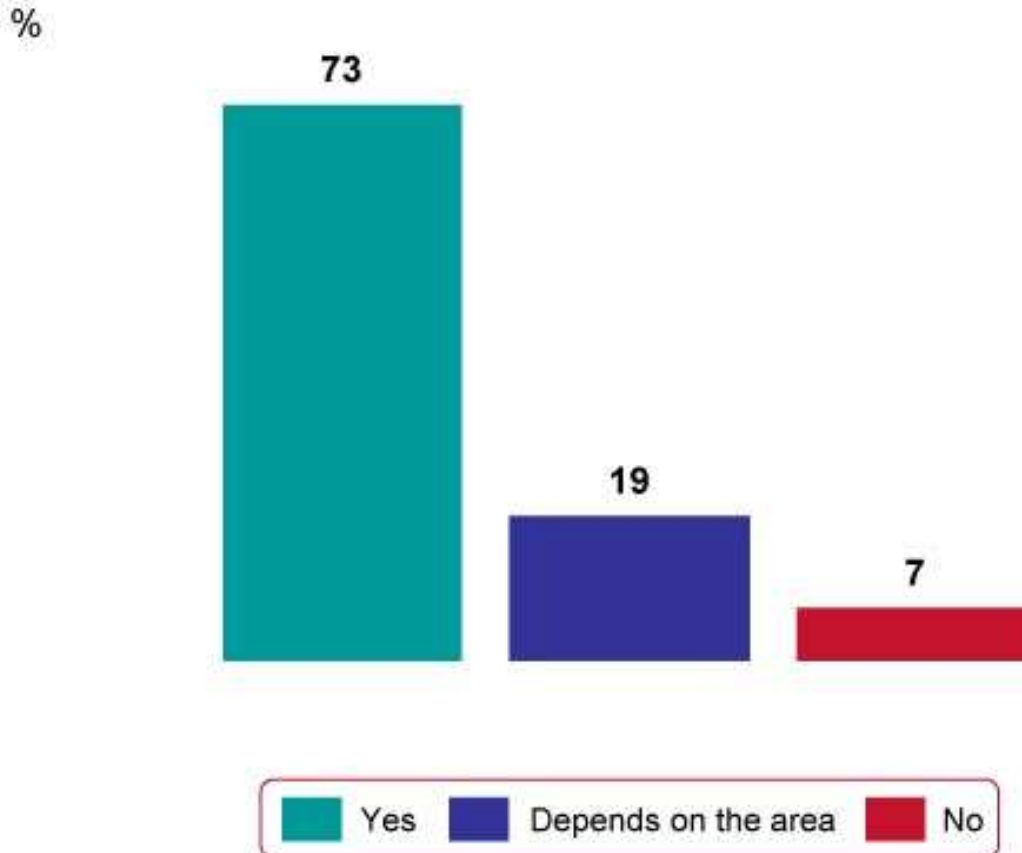
*Q: In your experience, do residential properties with original period features tend to sell more quickly than those that have lost their historic features ?*





# Strong agreement that well kept Conservation Areas add to the value of properties within them

*Q: Does a well kept Conservation Area add to the value of the properties within it provided they are in a reasonable condition themselves ?*



# Barnsley Rd C.A, Birmingham





# Chaldon Herring, Dorset







ENGLISH HERITAGE

HERITAGE AT

RISK

CONSERVATION

AREAS

EHHF, 28 May 2009

Dr Simon Thurley  
English Heritage

# Gloucester Docks, Gloucester

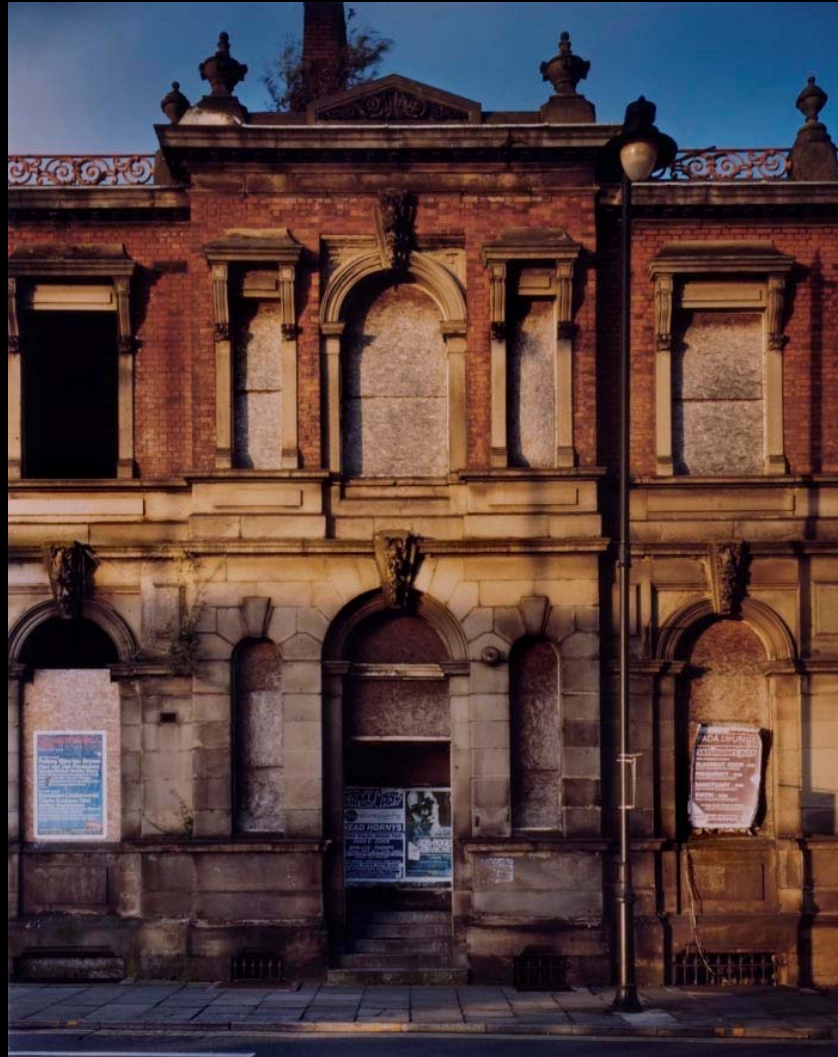




# Holmfirth CA, West Yorkshire



# Wigan, Greater Manchester





# Chaldon Herring, Dorset





# Barnsley Rd C.A, Birmingham



# Chaldon Herring, Dorset

